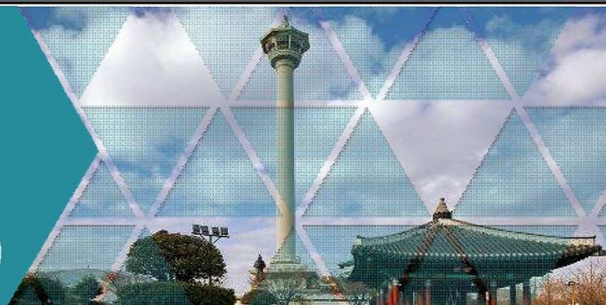


BUSAN 釜山

3 Days 2 Nights Hotel Package

Ex HKG valid for travel between 04Mar-31Dec2020



Issued on 04Mar20

Ticket must be issued on or before 31Mar20
GV2 "Q" Class
Please refer to the last page for airfare surcharge



Ramada Encore Haeundae

Adult sharing Twin: www.ramadaencorehaeundae.com

HKD2190 up

Room Category:
Superior



Extension Night: HKD520 up

Aventree Hotel Busan

Adult sharing Twin: www.aventreehotelbusan.com

HKD2250 up

Room Category:
Deluxe



Extension Night: HKD540 up

Crown Harbor Hotel Busan

Adult sharing Twin: www.crownharborhotel.com

HKD2250 up

Room Category:
Superior



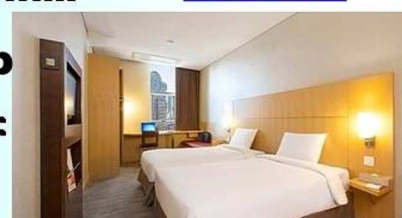
Extension Night: HKD580 up

Ibis Ambassador Busan City Centre

Adult sharing Twin: www.ambatel.com

HKD2250 up

Room Category:
Standard



Extension Night: HKD620 up

Solaria Nishitetsu Hotel Busan

Adult sharing Twin: <https://nnr-h.com/solaria>

HKD2290 up

Room Category:
Standard



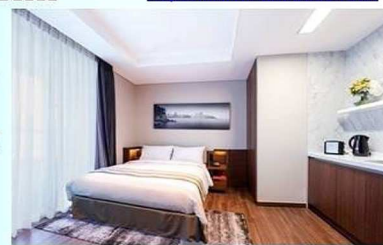
Extension Night: HKD620 up

Citadines Haeundae Busan

Adult sharing Twin: <https://www.citadines.com>

HKD2350 up

Room Category:
Studio



Extension Night: HKD670 up

Busan Business Hotel

Adult sharing Twin: www.busanbusinesshotel.com

HKD2350 up

Room Category:
Standard



Extension Night: HKD680 up

Lotte Hotel Busan

Adult sharing Twin: www.lottehotel.com

HKD2790 up

Room Category:
Deluxe



Extension Night: HKD1130 up

BUSAN 釜山

3 Days 2 Nights Hotel Package

Ex HKG valid for travel between 04Mar-31Dec2020

Issued on 04Mar20

Ticket must be issued on or before 31Mar20
GV2 "Q" Class
Please refer to the last page for airfare surcharge



Paradise Hotel Busan

Adult sharing Twin: www.busanparadisehotel.co.kr**HKD2950 up****Room Category:
Deluxe City****Extension Night: HKD1280 up**

Park Hyatt Busan

Adult sharing Twin: <https://www.hyatt.com>**HKD3250 up****Room Category:
Deluxe****Extension Night: HKD1540 up**

Period	Surcharge	Class	Remarks
27Apr-23Jun, 28Jun-09Jul	No Surcharge	Q	Ticket must be issued on or before 31Mar20
	HKD500/Adult, HKD380/Child	N	
	HKD900/Adult, HKD680/Child	S	
04Mar-20Dec, 27-31Dec	HKD1510/Adult, HKD1140/Child	S	Nil
	HKD2000/Adult, HKD1500/Child	V	
	HKD2800/Adult, HKD2100/Child	L	
04Mar-31Dec	HKD3490/Adult, HKD2620/Child	M	
	HKD4100/Adult, HKD3080/Child	K	
	HKD4800/Adult, HKD3600/Child	H	
Business Class			
27Apr-23Jun, 28Jun-09Jul	HKD3950/Adult, HKD2970/Child	I	Ticket must be issued on or before 31Mar20
04Mar-09Jul, 21Aug-20Dec, 27-31Dec	HKD7150/Adult, HKD5370/Child	D	Nil
10Jul-20Aug, 21-26Dec	HKD9150/Adult, HKD6870/Child		

Prices are inclusive of:

- Roundtrip economy class air ticket To Busan by Cathay Dragon / Cathay Pacific
- 2 nights hotel accommodation at your choice
- Room Only
- 0.15% TIC Levy

Remarks:

- Booking Class: Please refer to surcharge table
- Ticket Validity: 2-7 Days
- Package price are subject to the Hong Kong Passenger Security Charge, taxes and other surcharges.
- Min. 2 Adults must travel together on both inbound & outbound flight and check in together
- Booking must be under One PNR.
- "KA/CX GV2 Fare IN (Date) OUT (Date) at XXX Hotel" must be input in OSI field
- NON-Refundable for all NO SHOW booking
- Valid on CX/KA operating flights & CX code share flights operated by KA or KA code share flights operated by CX.
- Tickets are non-endorse, non-reroute, non-refund
- All prices & conditions are subject to change without prior notice.
- Subject to Japanese Holiday surcharge, dates and surcharge amounts to be advised

**** This package is under the protection of TIC Compensation Fund. ****